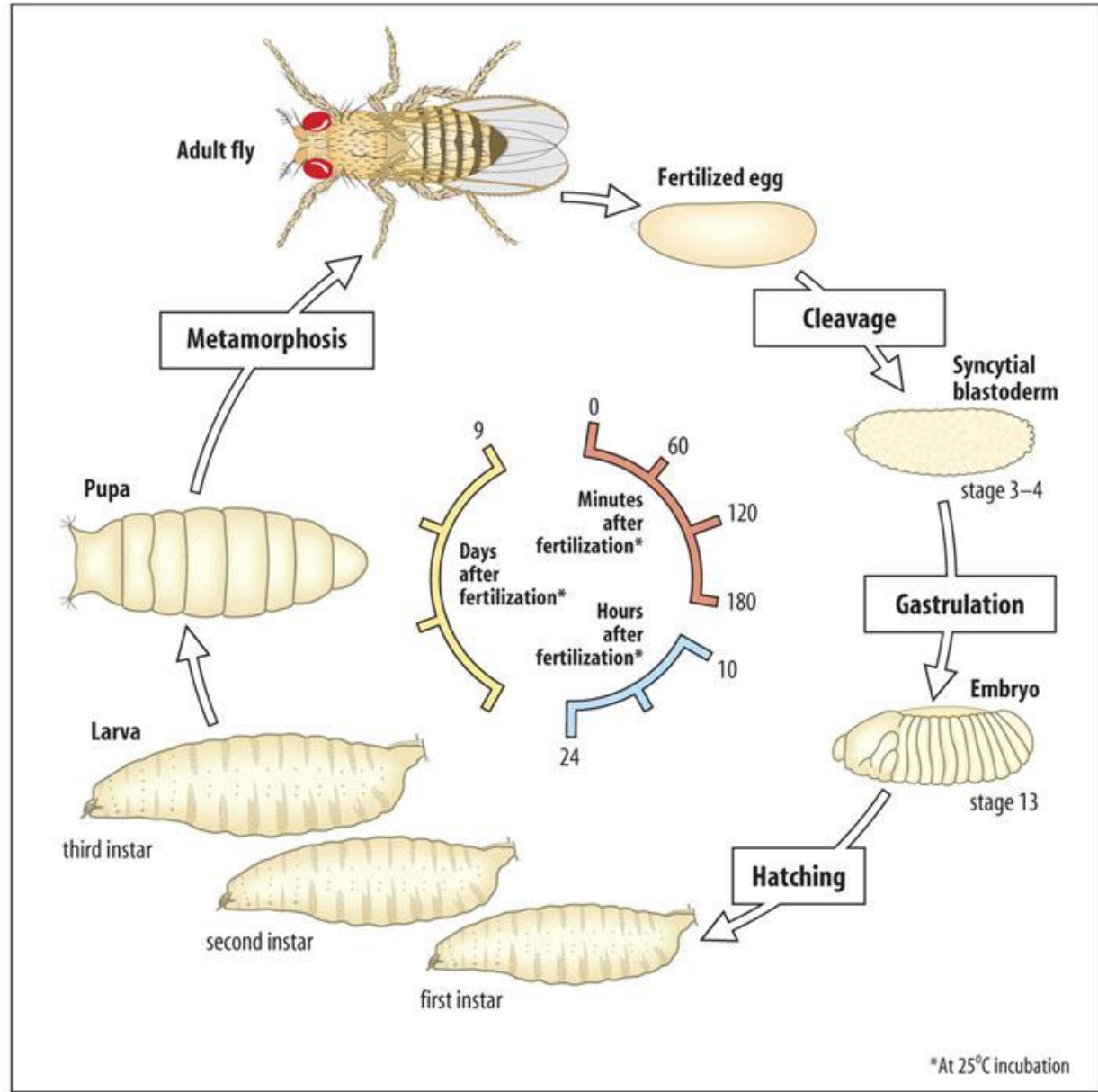
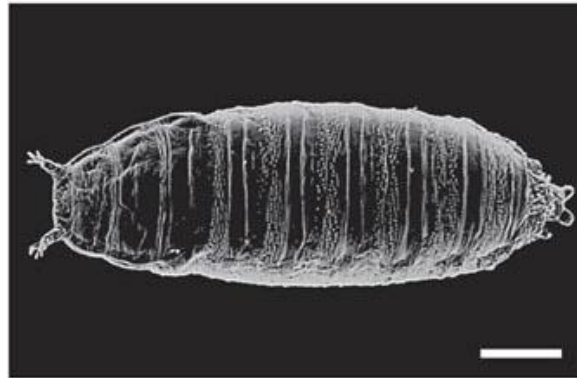
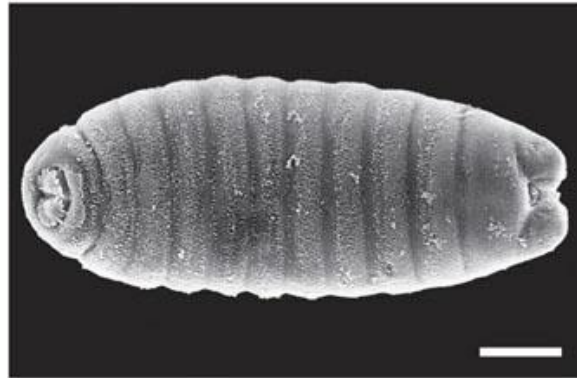
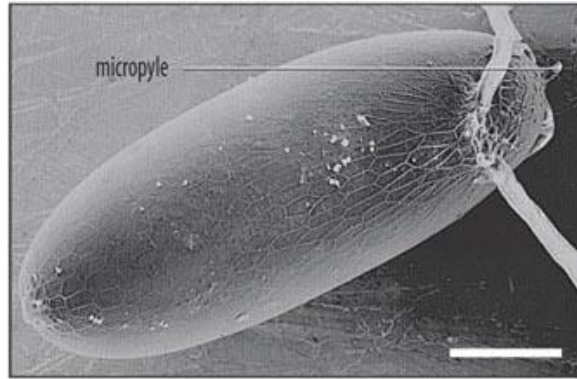
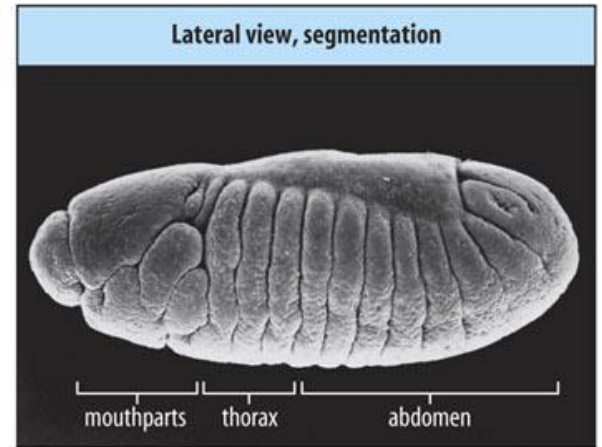
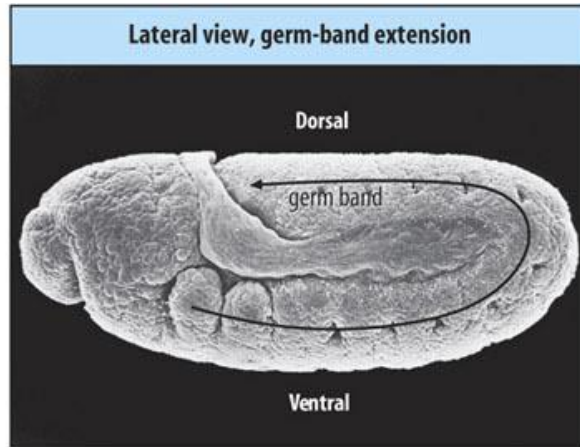
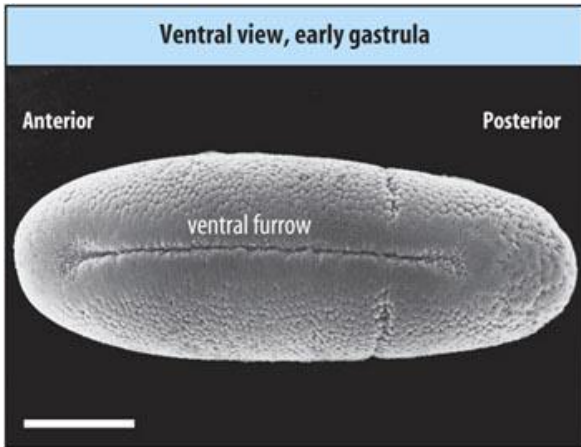
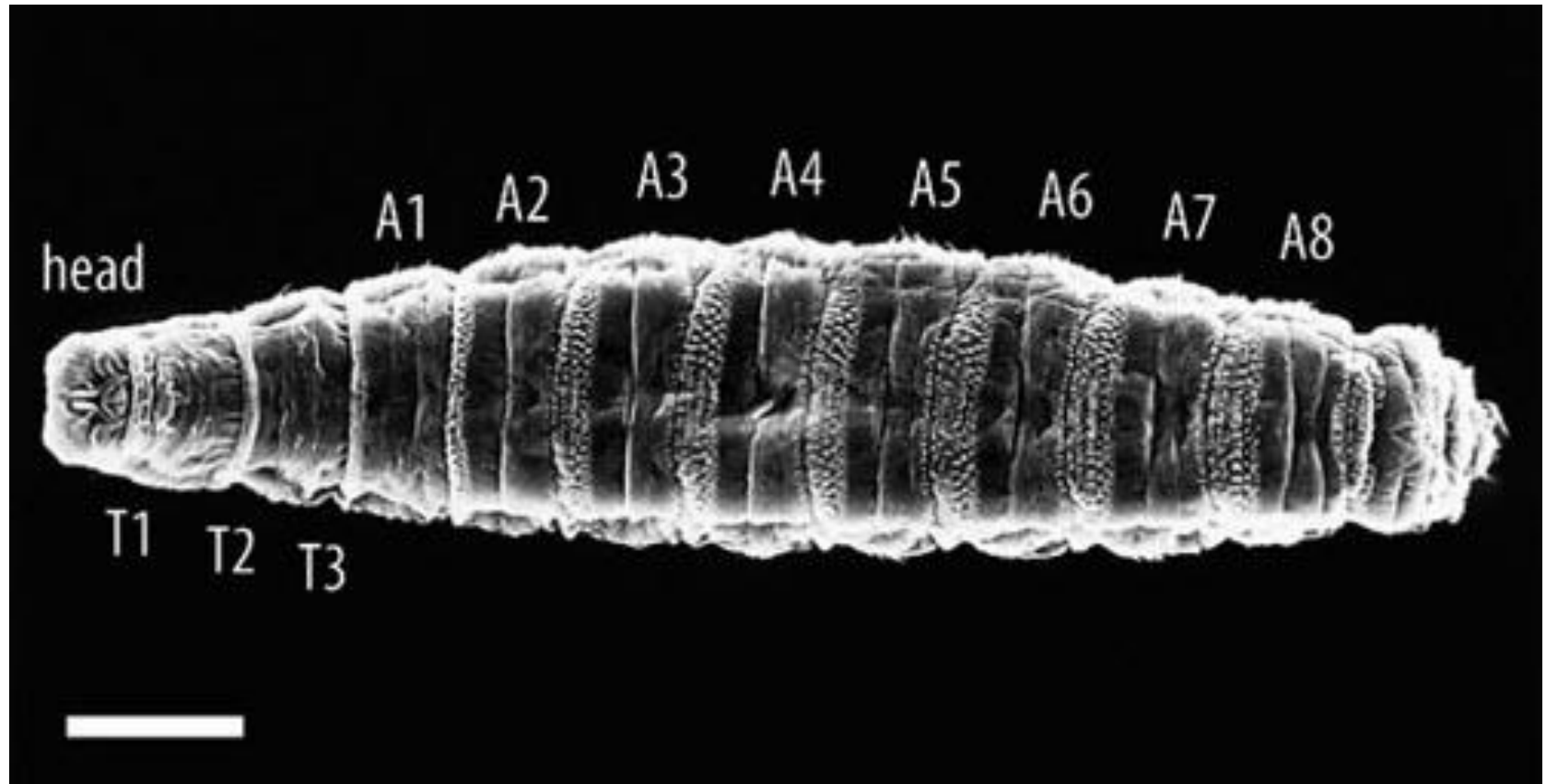


# Intro to Drosophila







head

A1

A2

A3

A4

A5

A6

A7

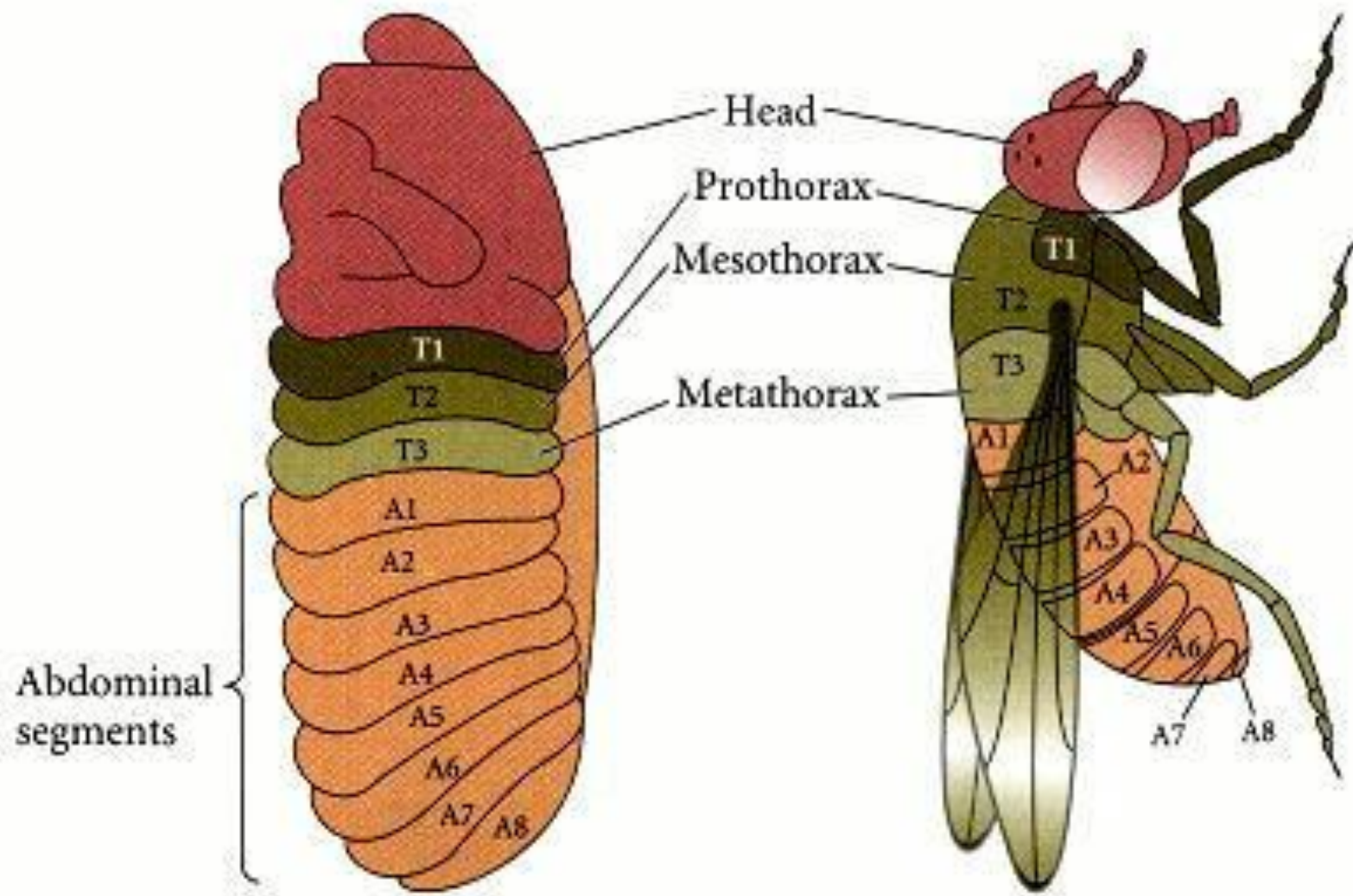
A8

T1

T2

T3





Larva

Metamorphosis

Adult fly

salivary glands

Imaginal discs for:

mouthparts

antenna

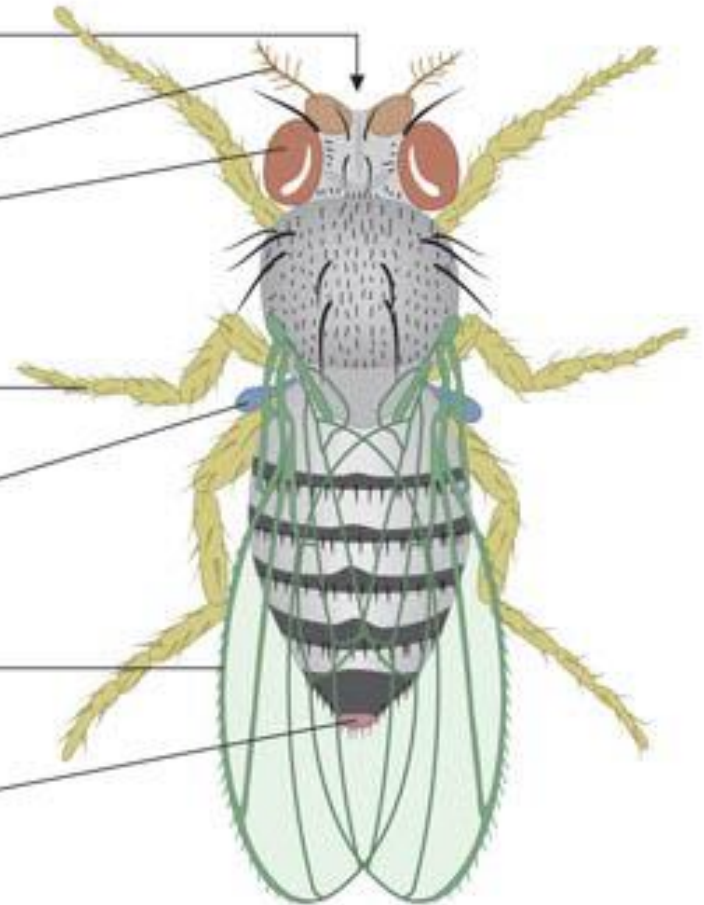
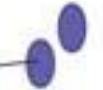
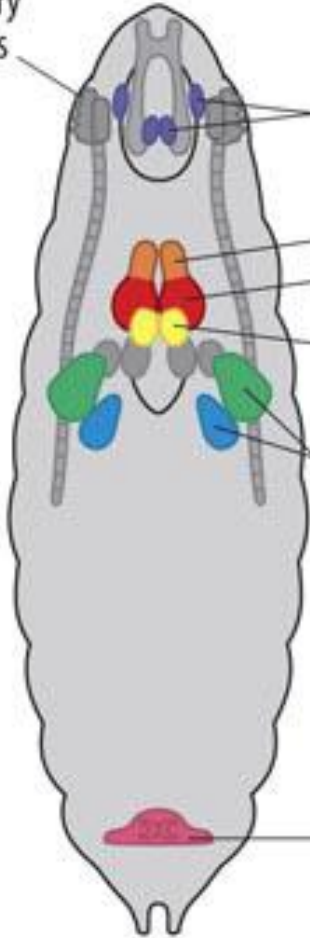
eye

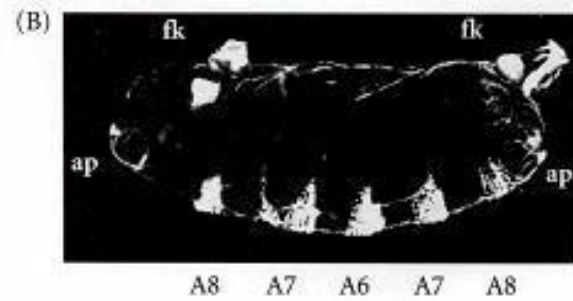
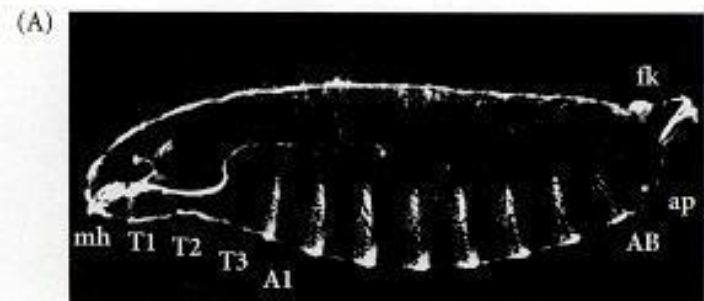
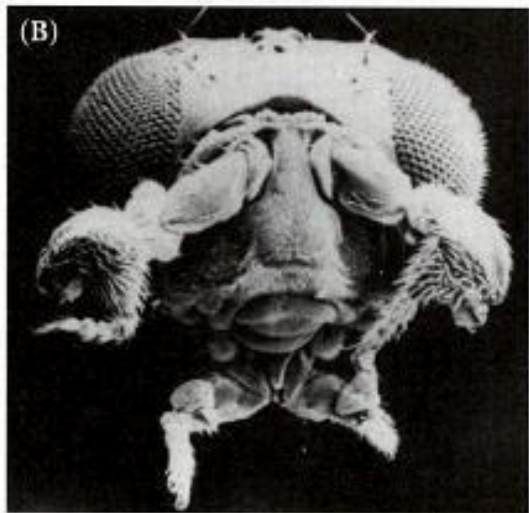
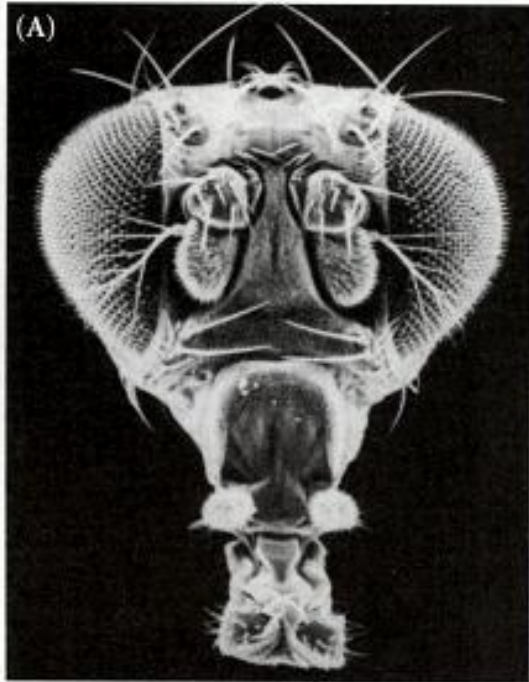
leg

haltere

wing

genitalia











[arrogantscientist.com](http://arrogantscientist.com)



arrogantscientist.com



arrogantscientist.com

